



# CHCNAV Sample Data Set



3D Mobile Mapping | Mar. 2024

Make your work more efficient

Content

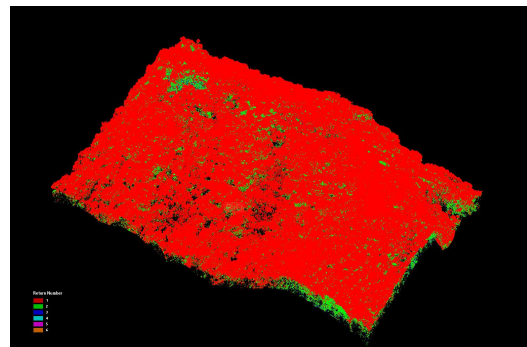
- 1. AA10 ..... 1
  - (1) AA10 Scanning Data of a Hill with Lush Vegetation ..... 1
  - (2) AA10 Scanning Data of Power line ..... 1
  - (3) Comparison of AA10 and L2 Data at Different Flight Heights ..... 2
  - (4) AA10 Scanning Data of Urban Scene ..... 3
  - (5) AA10 Scanning Data of River, Bridge and Power line ..... 3
  - (6) AA10 Scanning Data of Trees ..... 4
- 2. AU20 ..... 5
  - (1) AU20 Scanning Data of Port ..... 5
  - (2) AU20 Scanning Data of Power line ..... 5
  - (3) AU20 Vehicle Data & Airborne Data ..... 6
- 3. RS10 ..... 7
  - (1) RS10 Scanning Data of Underground Garage ..... 7
  - (2) RS10 Scanning Data of Office Park ..... 7
  - (3) RS10 Scanning Data of Building Elevation ..... 7
  - (4) RS10 Scanning Data of Underground pipe gallery ..... 8
  - (5) RS10 Scanning Data of Foundation ditch ..... 8
  - (6) RS10 Scanning Data of Highway ..... 9
  - (7) RS10 Scanning Data of Forestry ..... 9
  - (8) RS10 Scanning Data of Narrow Alley ..... 10
- 4. CoProcess ..... 11
  - (1) Extraction project ..... 11

## 1. AA10

### (1) AA10 Scanning Data of a Hill with Lush Vegetation

Product Model	Mode	Flight Height	Flight Speed	Point Frequency
AA10 + M350	Airborne	120m	12m/s	500kHz

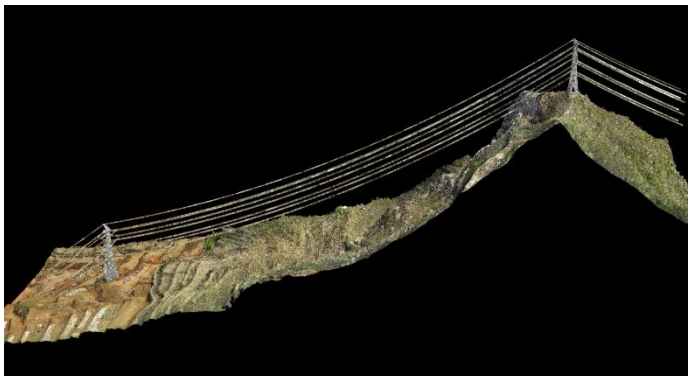
LINK: <https://we.tl/t-tWbm13gezC>



### (2) AA10 Scanning Data of Power line

Product Model	Mode	Flight Height	Flight Speed	Point Frequency	Voltage
AA10 + M350	Airborne	100m	10m/s	500kHz	500kv

LINK: <https://we.tl/t-xZ8G7s8MTq>



### (3) Comparison of AA10 and L2 Data at Different Flight Heights

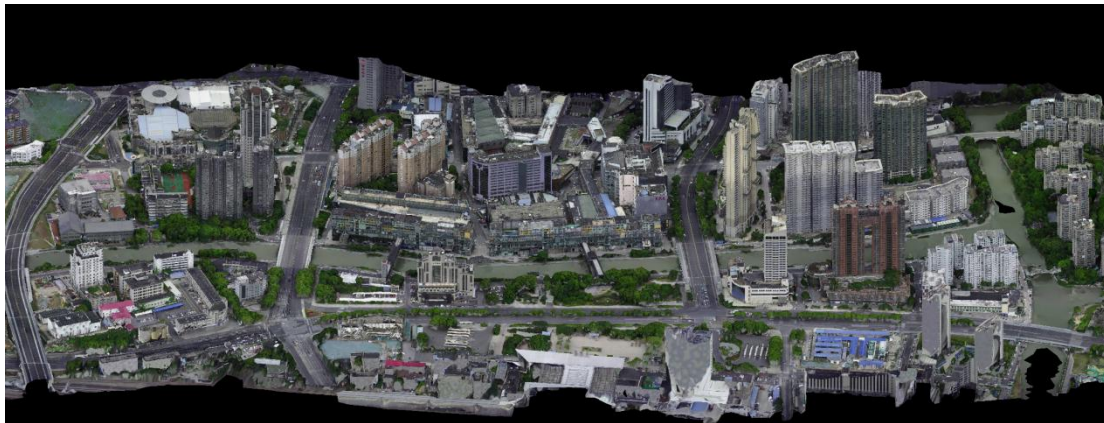
Flight Height	Point Frequency	AA10 Data	L2 Data_smooth	L2 Data_unsmooth
50m	500kHz	<a href="https://we.tl/t-y4GGqjdEuT">https://we.tl/t-y4GGqjdEuT</a> <a href="https://we.tl/t-RCXMTc42fr">https://we.tl/t-RCXMTc42fr</a>	<a href="https://we.tl/t-k3vURqcdmX">https://we.tl/t-k3vURqcdmX</a> <a href="https://we.tl/t-B2p1n7iqAL">https://we.tl/t-B2p1n7iqAL</a>	<a href="https://we.tl/t-ENrEQP58jL">https://we.tl/t-ENrEQP58jL</a> <a href="https://we.tl/t-B9gWGceNLQ">https://we.tl/t-B9gWGceNLQ</a>
70m	500kHz	<a href="https://we.tl/t-VFOIB9vHCy">https://we.tl/t-VFOIB9vHCy</a> <a href="https://we.tl/t-HVU0XZbiTa">https://we.tl/t-HVU0XZbiTa</a>	<a href="https://we.tl/t-xNfCLGQH2D">https://we.tl/t-xNfCLGQH2D</a> <a href="https://we.tl/t-jyLOsVTdUE">https://we.tl/t-jyLOsVTdUE</a>	<a href="https://we.tl/t-dPiNdePtck">https://we.tl/t-dPiNdePtck</a> <a href="https://we.tl/t-f3i73A61M9">https://we.tl/t-f3i73A61M9</a>
80m	500kHz	<a href="https://we.tl/t-opfDTvP871">https://we.tl/t-opfDTvP871</a>	<a href="https://we.tl/t-iTKFGnGqR5">https://we.tl/t-iTKFGnGqR5</a>	<a href="https://we.tl/t-zlrNL2hKpt">https://we.tl/t-zlrNL2hKpt</a>
110m	500kHz	<a href="https://we.tl/t-JJcjUuZy0G">https://we.tl/t-JJcjUuZy0G</a>	<a href="https://we.tl/t-pbSzyf5VwE">https://we.tl/t-pbSzyf5VwE</a>	<a href="https://we.tl/t-Ydt10CSVaS">https://we.tl/t-Ydt10CSVaS</a>
150m	300kHz	<a href="https://we.tl/t-5RA67lcTQs">https://we.tl/t-5RA67lcTQs</a>	<a href="https://we.tl/t-w5coXZLFrt">https://we.tl/t-w5coXZLFrt</a>	<a href="https://we.tl/t-w5coXZLFrt">https://we.tl/t-w5coXZLFrt</a>
180m	300kHz	<a href="https://we.tl/t-k5DMetwqU0">https://we.tl/t-k5DMetwqU0</a>	<a href="https://we.tl/t-IWEeTwMx9F">https://we.tl/t-IWEeTwMx9F</a>	<a href="https://we.tl/t-qtLeJGRbdD">https://we.tl/t-qtLeJGRbdD</a>
200m	300kHz	<a href="https://we.tl/t-qgTxJSMVzt">https://we.tl/t-qgTxJSMVzt</a>	<a href="https://we.tl/t-5lLdkpThxH">https://we.tl/t-5lLdkpThxH</a>	<a href="https://we.tl/t-MGna9D4NkV">https://we.tl/t-MGna9D4NkV</a>



**(4) AA10 Scanning Data of Urban Scene**

Product Model	Mode	Flight Height	Flight Speed	Point Frequency
AA10 + M350	Airborne	/	/	500kHz

LINK: <https://go.wetransfer.com/t-ItRvGO7u4M>



**(5) AA10 Scanning Data of River, Bridge and Power line**

Product Model	Mode	Flight Height	Flight Speed	Point Frequency
AA10 + M350	Airborne	/	/	500kHz

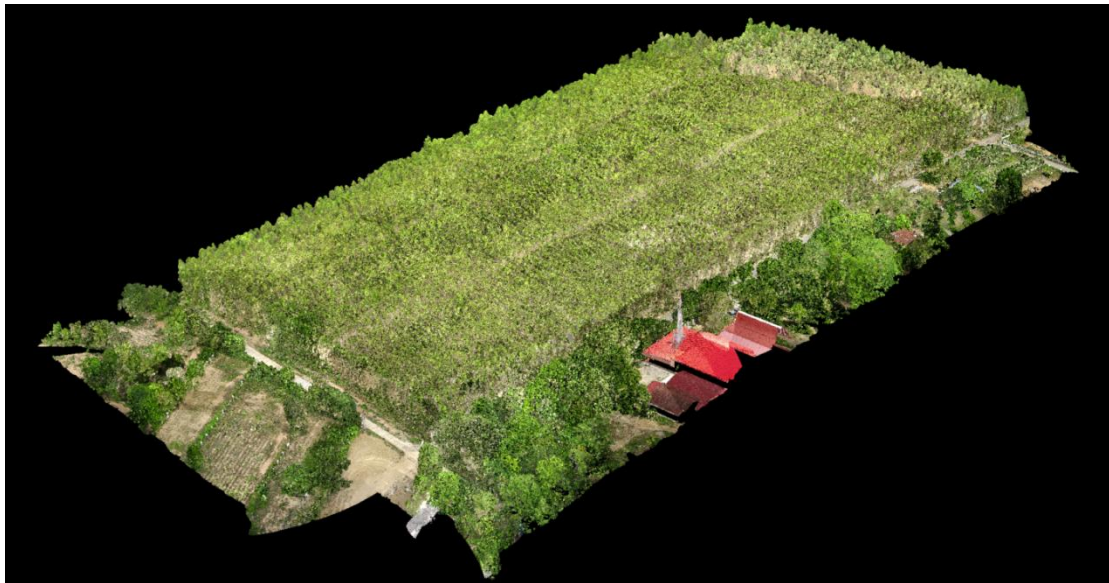
LINK: <https://go.wetransfer.com/t-xMfw9cjC27>



**(6) AA10 Scanning Data of Trees**

Product Model	Mode	Flight Height	Flight Speed	Point Frequency
AA10 + M350	Airborne	/	/	500kHz

LINK: <https://we.tl/t-3DGB2Ew7z3>

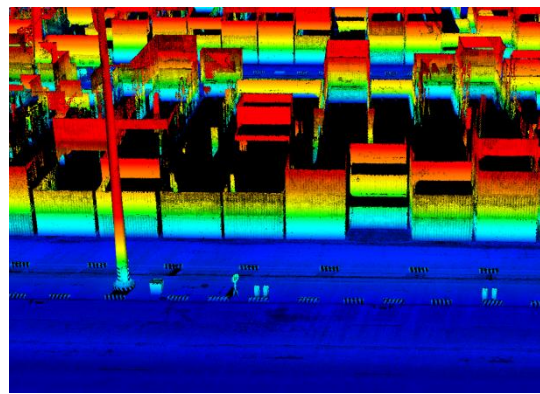
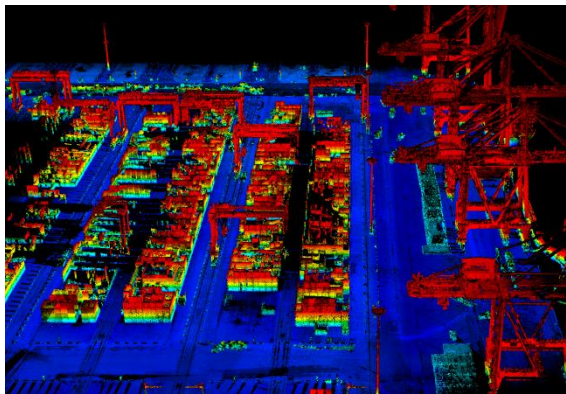


## 2. AU20

### (1) AU20 Scanning Data of Port

Product Model	Mode	Point Frequency
AU20+AP5	Backpack	/

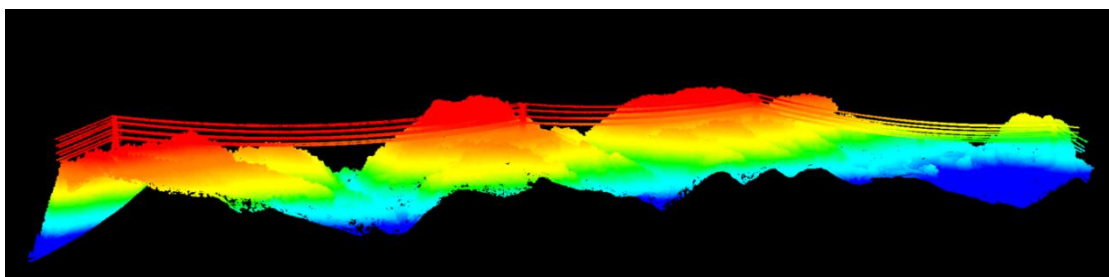
LINK: <https://we.tl/t-9b8rFoPis4>



### (2) AU20 Scanning Data of Power line

Product Model	Mode	Flight Height	Flight Speed	Point Frequency
AA10 + Fixed_wing UAV	Airborne	/	/	/

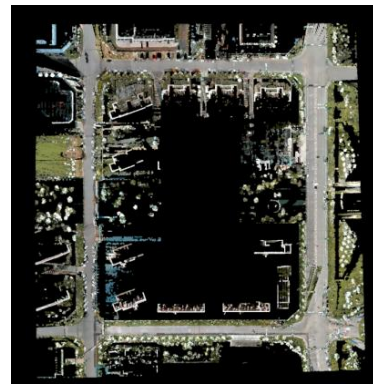
LINK: <https://we.tl/t-0ul16WcVDU>



**(3) AU20 Vehicle Data & Airborne Data**

Product Model	Mode	Flight Height	Flight Speed	Point Frequency
AU20+BB4	Airborne	/	/	100kHz
AU20+AP5	Vehicle	/	/	500kHz

LINK: <https://we.tl/t-6sWXM3CbWL>

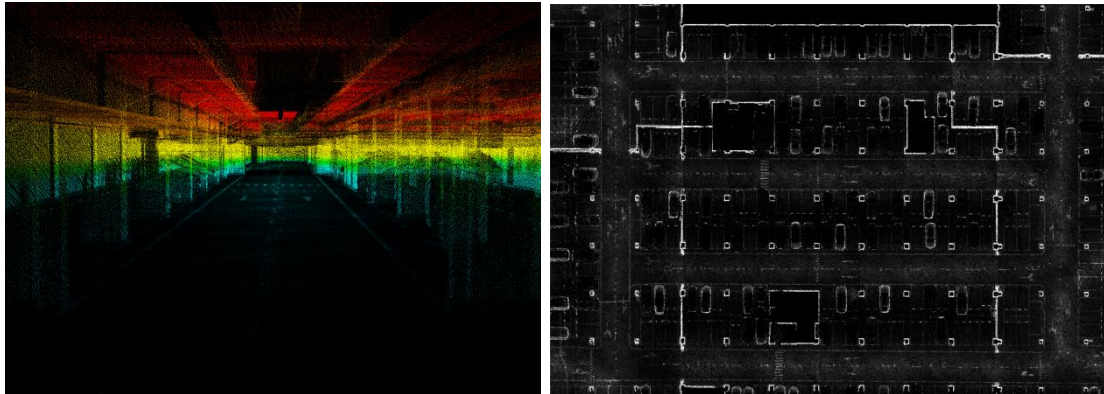




### 3. RS10

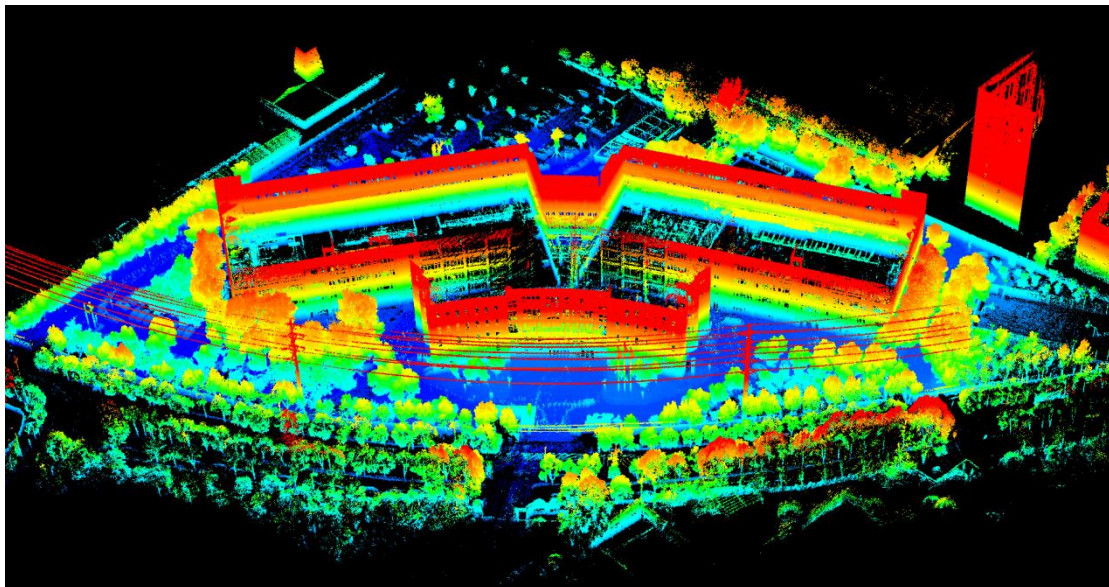
#### (1) RS10 Scanning Data of Underground Garage

LINK: <https://we.tl/t-sEHG7YVu9H>



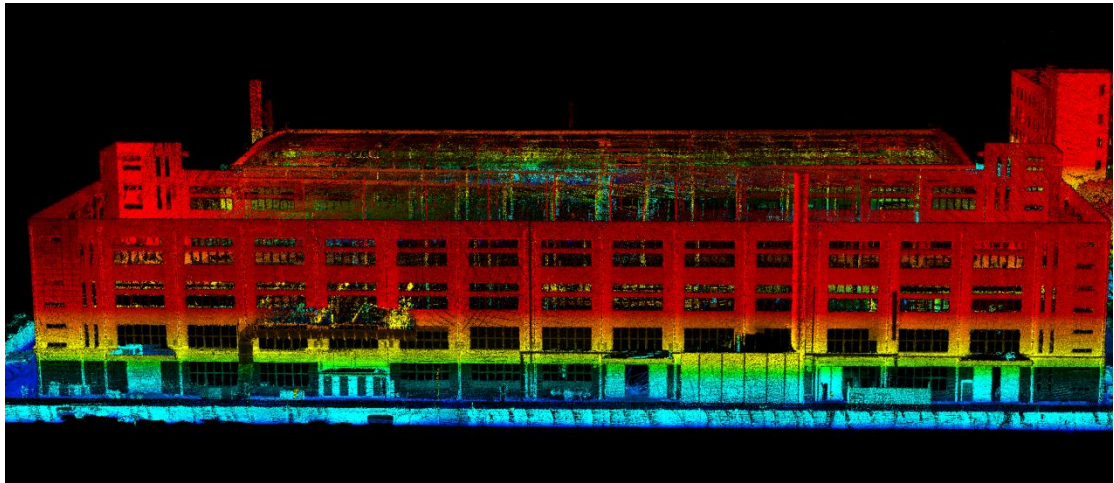
#### (2) RS10 Scanning Data of Office Park

LINK: <https://we.tl/t-xSh05xKvrg>



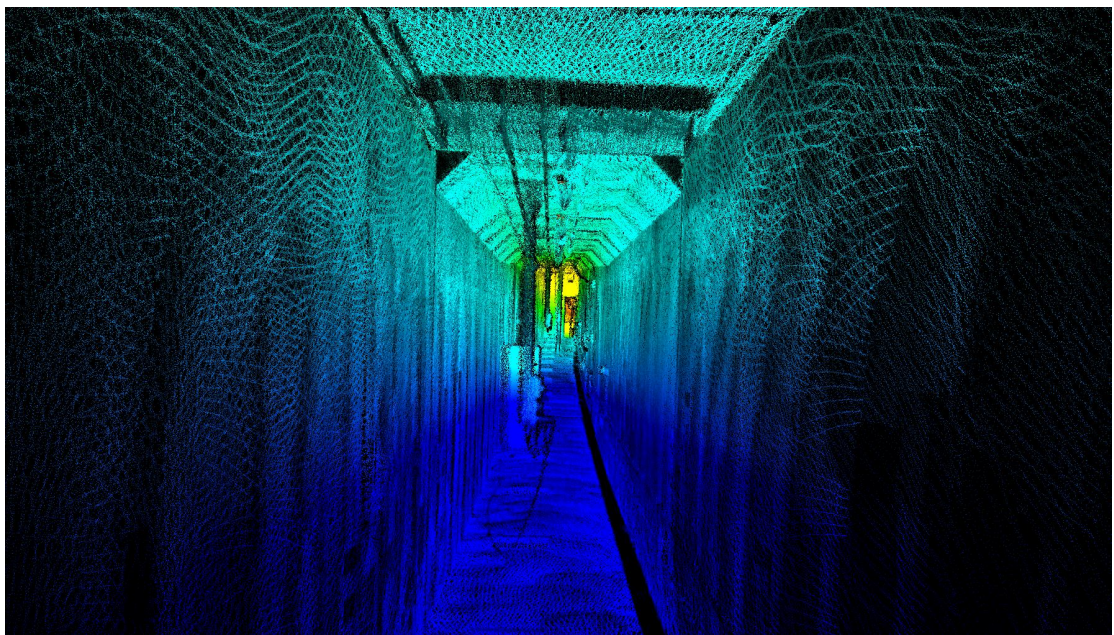
#### (3) RS10 Scanning Data of Building Elevation

LINK: <https://we.tl/t-UKQWEq0j6M>



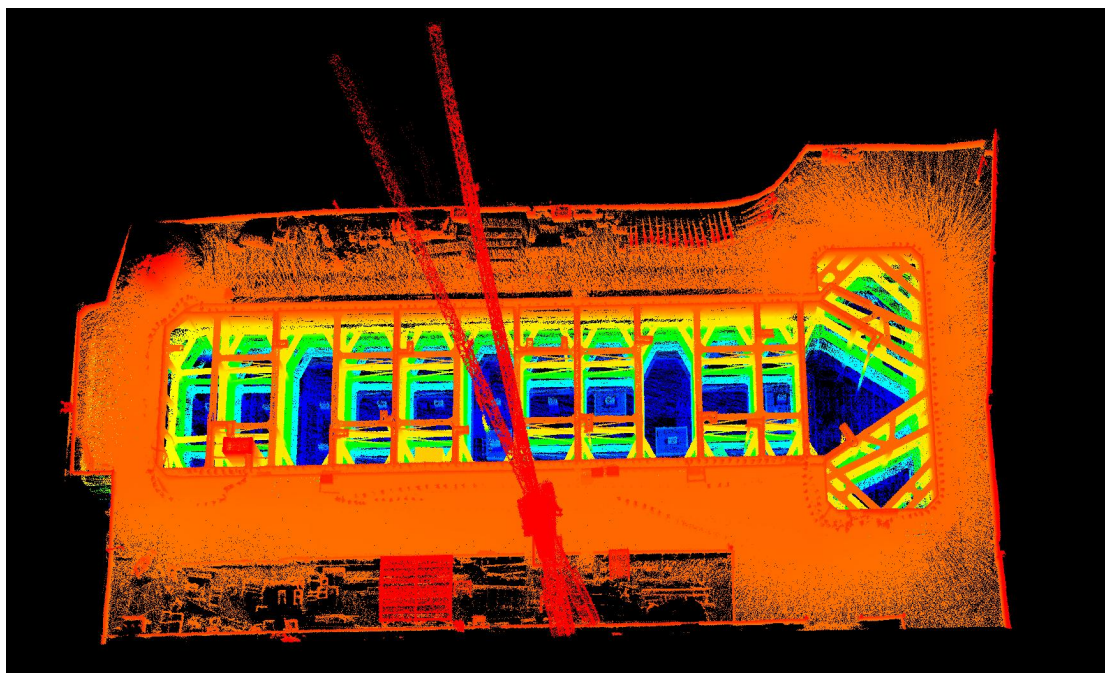
**(4) RS10 Scanning Data of Underground pipe gallery**

LINK: <https://we.tl/t-OdSf4tMBDT>



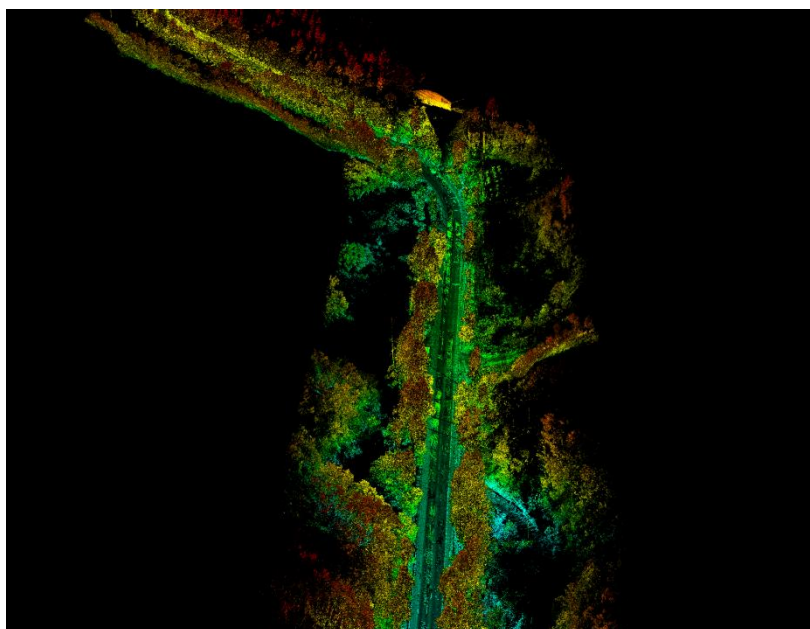
**(5) RS10 Scanning Data of Foundation ditch**

LINK: <https://we.tl/t-wNguXxARh1>



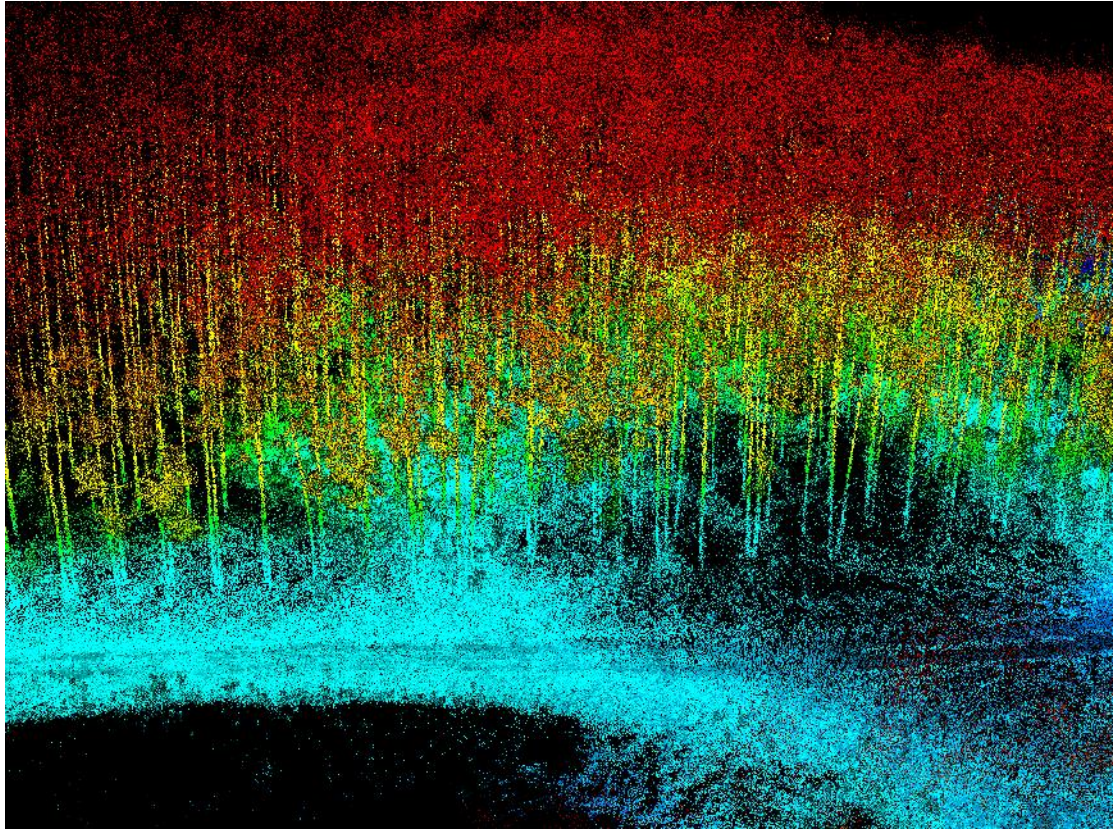
(6) RS10 Scanning Data of Highway

LINK: <https://we.tl/t-4rDAfdQK2a>



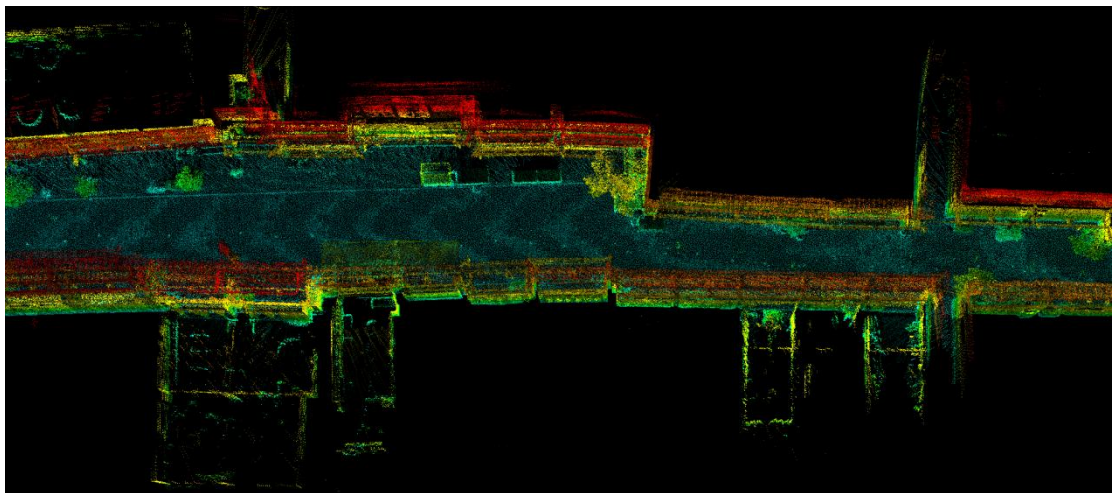
(7) RS10 Scanning Data of Forestry

LINK: <https://we.tl/t-zsD9NgOOYM>



(8) RS10 Scanning Data of Narrow Alley

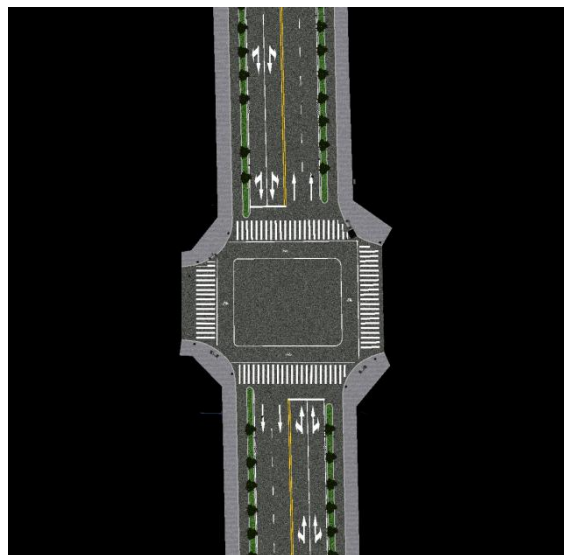
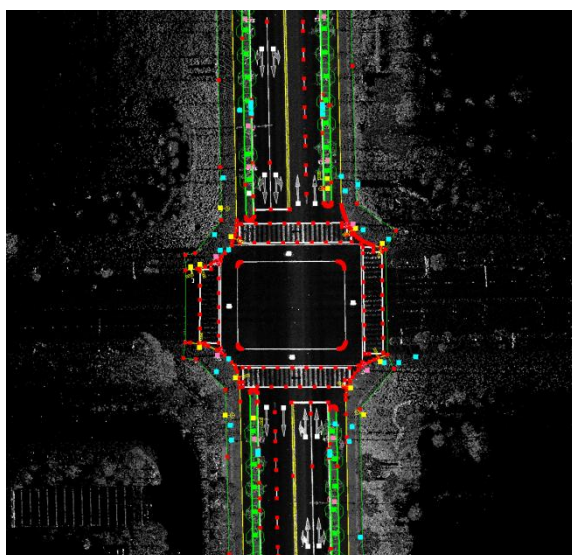
LINK: <https://we.tl/t-Pv3FvJQrOC>



## 4. CoProcess

### (1) Extraction Project

LINK: <https://we.tl/t-k5IMuKwtYT>



## CHC Navigation

Building D, NO. 577 songying Road,  
Qingpu District, 201703 Shanghai, China  
Tel: +86 21 542 60 273 | Fax: +86 21 649 50 963  
Email: [sales@chcnv.com](mailto:sales@chcnv.com) | [support@chcnv.com](mailto:support@chcnv.com)  
Skype: chcnv\_support  
Website: [www.chcnv.com](http://www.chcnv.com)